



Irish Natural Capital Accounting for Sustainable Environments

Open Data Use: Our findings from the INCASE Project and Data4Nature Report

National Open Data Conference: 30/11/2021





Stocks:

forests, wetlands, rivers,
seagrass beds, reefs,
subsoils, groundwater

Flows:

timber, fish, carbon,
water, habitat, recreation,
amenity, aggregates, geo-
forms

INCASE

Irish Natural Capital Accounting for Sustainable Environments



Jane Stout



Catherine Farrell



Trinity
College
Dublin

The University of Dublin



Mary Kelly-Quinn



Lisa Coleman



Stephen Kinsella



Daniel Norton



UNIVERSITY of LIMERICK
OILLSCOIL LUIMNIGH



Cathal O'Donoghue



OÉ Gaillimh
NUI Galway



Iseult Sheehy



Fiona Smith



NATURAL
CAPITAL
IRELAND



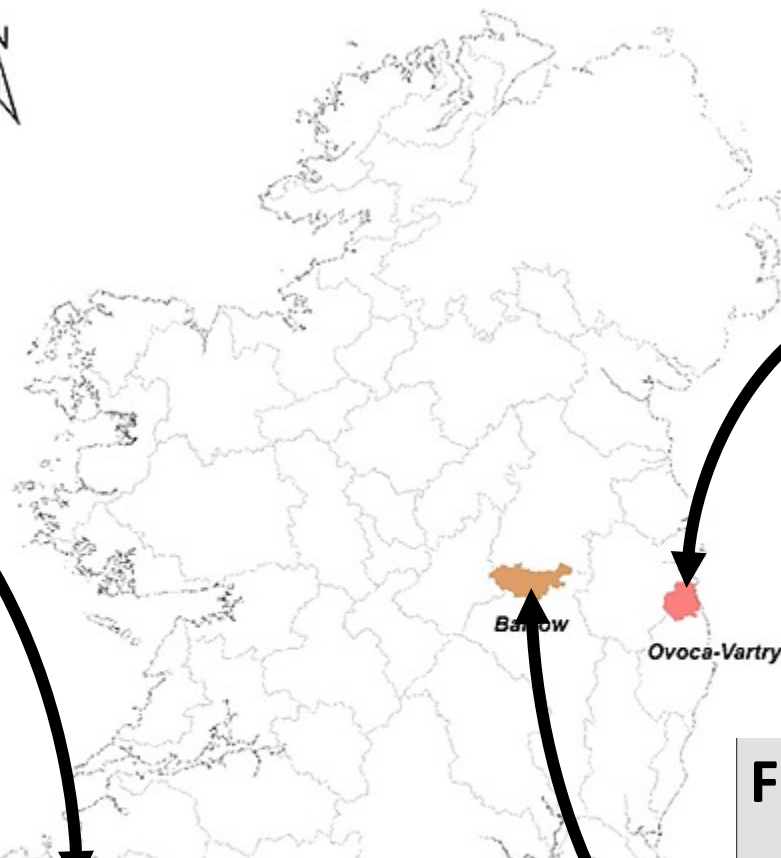
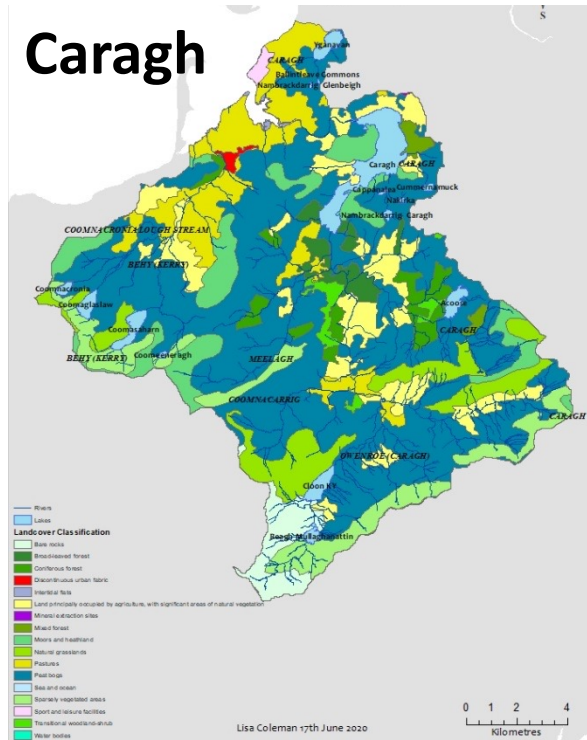
Carl Obst



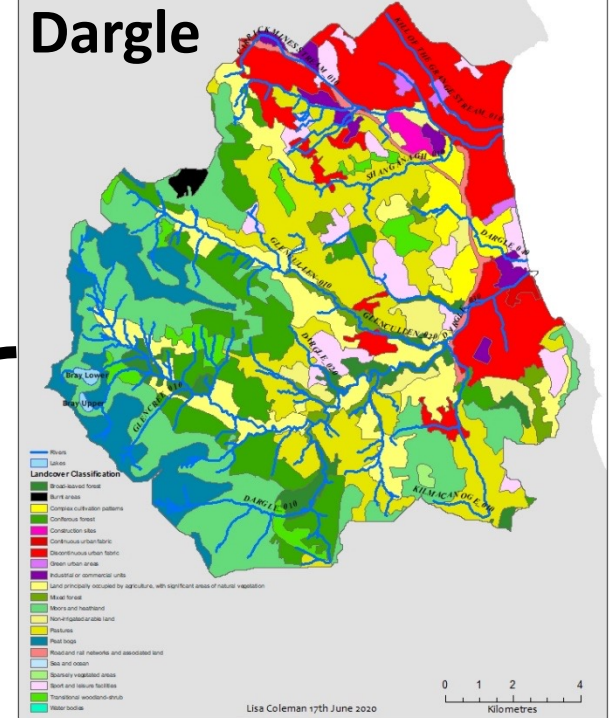
Mark Eigenraam



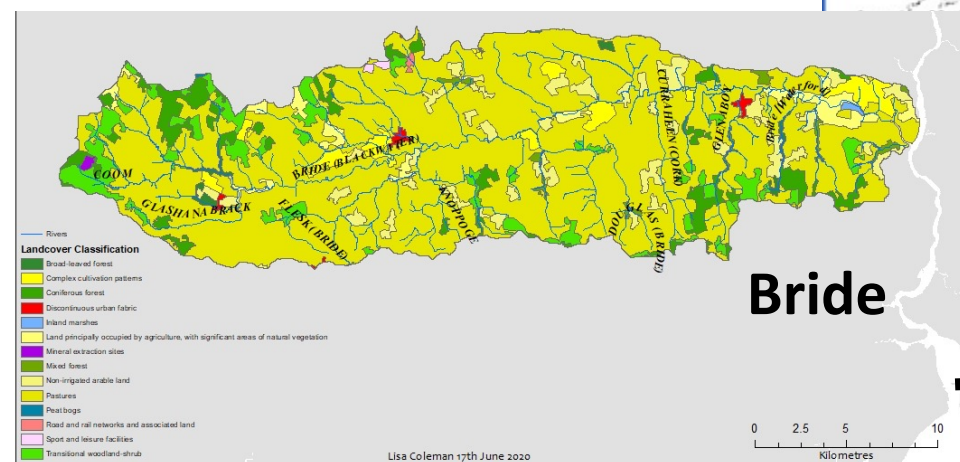
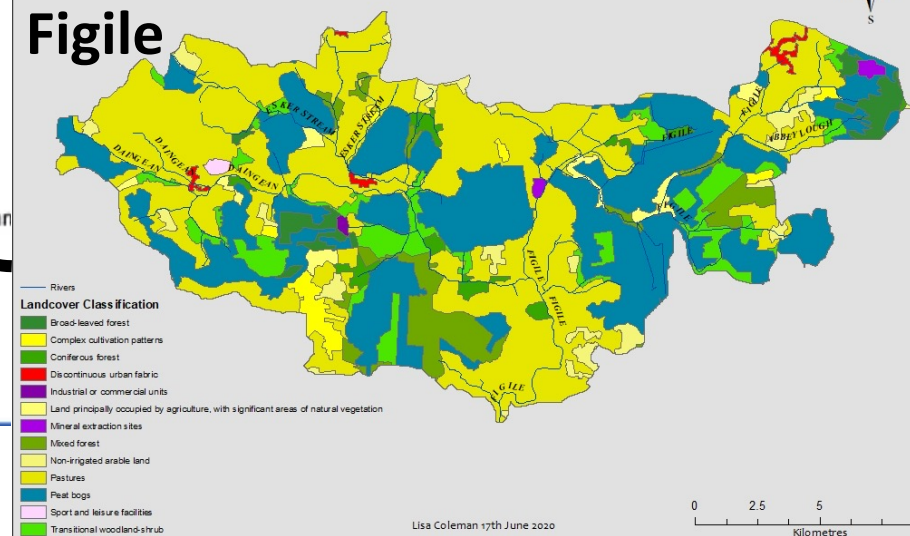
IDEEA Group
Institute for Development of Environmental-Economic Accounting



Dargle

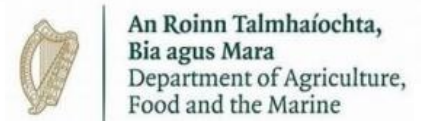
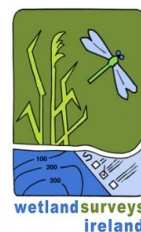


Figile



CORINE 2018

Agencies



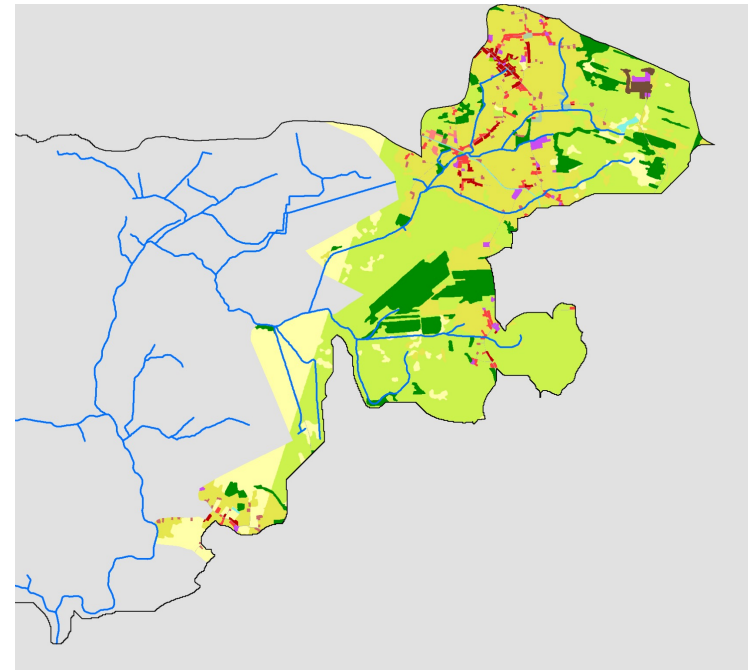
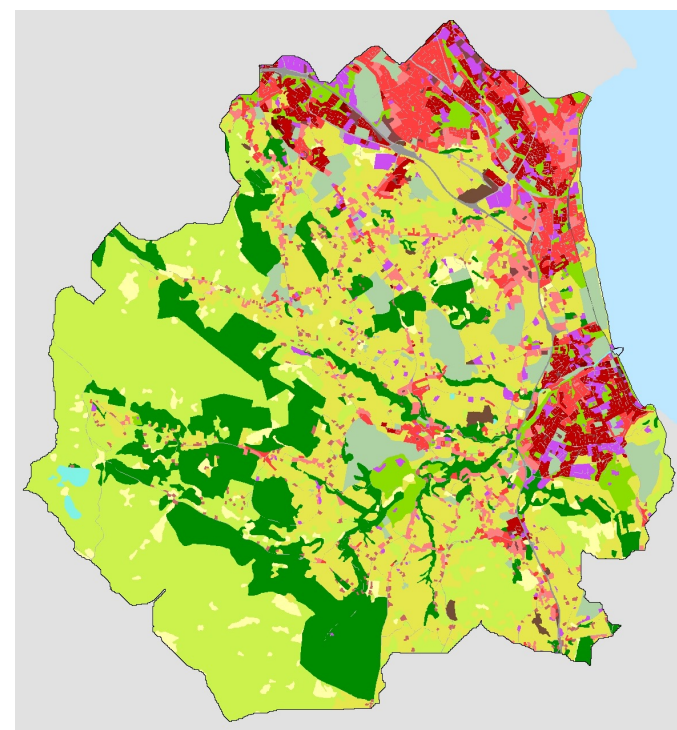
Challenges

1. Finding the Data



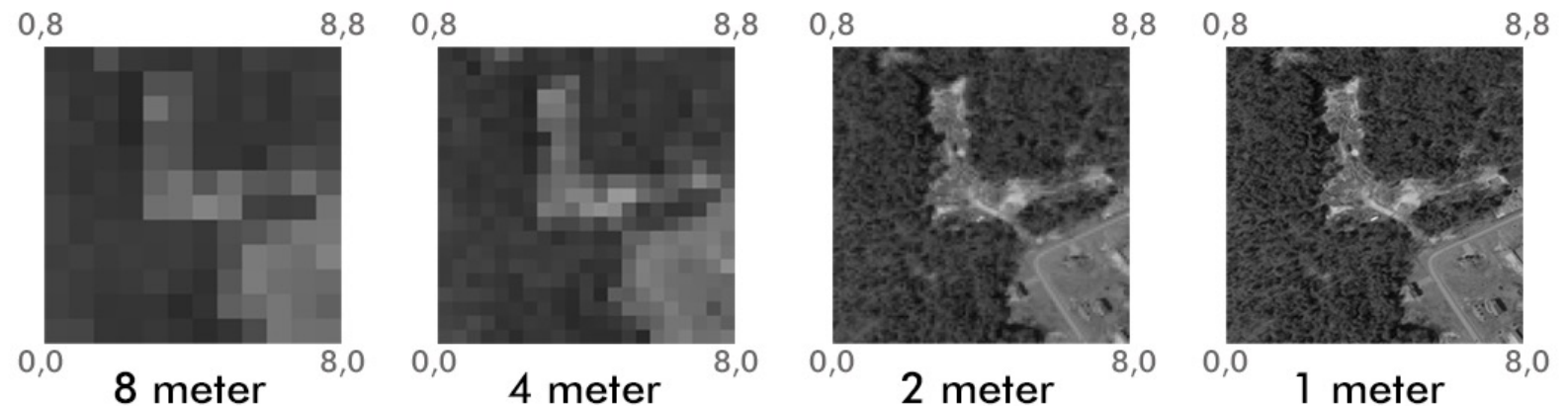
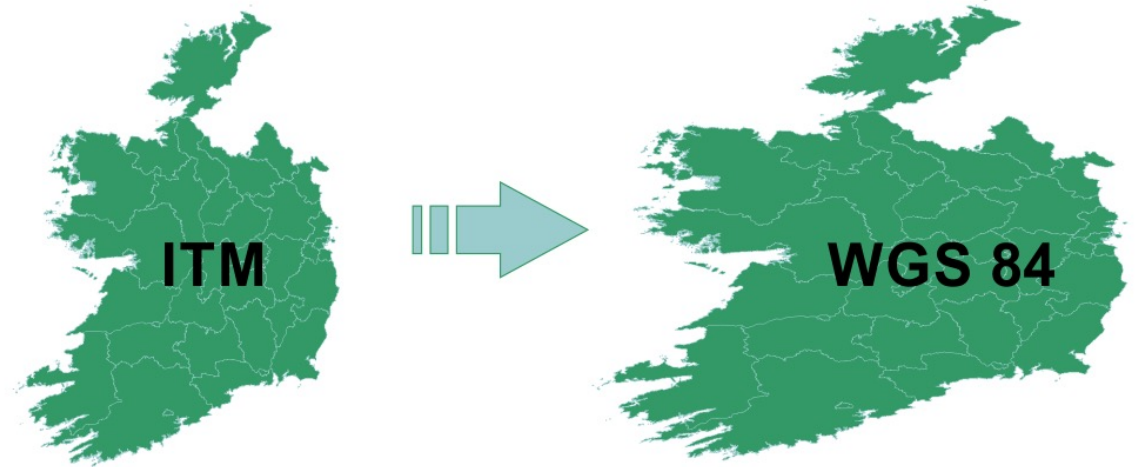
Challenges

1. Finding the Data
2. Coverage



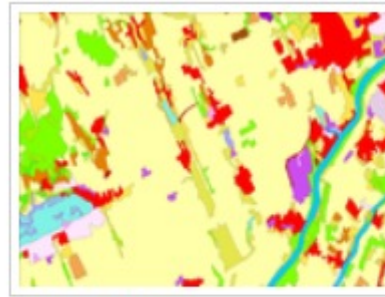
Challenges

1. Finding the Data
2. Coverage
3. Resolution and Coordinates

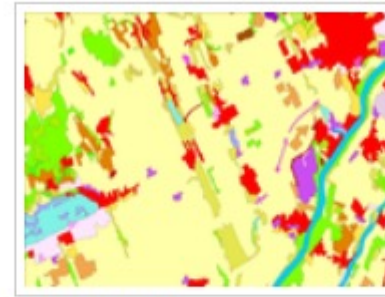


Challenges

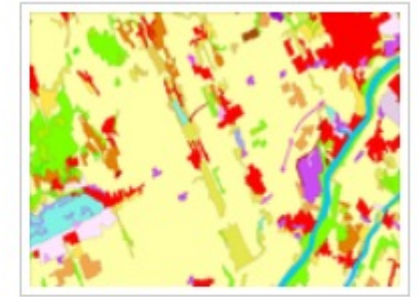
1. Finding the Data
2. Coverage
3. Resolution and Coordinates
4. Time Series



CLC 2000



CLC 2006



CLC 2012

STATUS 2007-2009

☐ WFD Status Geodatabase (All Waterbodies) 2007-2009 - January 2017

☐ WFD Status (GIS) (All Waterbodies) 2007-2009 - January 2017

STATUS 2010-2012

☐ WFD Status Geodatabase (All Waterbodies) 2010-2012 - January 2017

☐ WFD Status (GIS) (All Waterbodies) 2010-2012 - January 2017

STATUS 2010-2015

☐ WFD Status Geodatabase (All Waterbodies) 2010-2015 - May 2017

☐ WFD Status (GIS) (All Waterbodies) 2010-2015 - May 2017

STATUS 2013-2018

☐ WFD Status Geodatabase (All Waterbodies) 2013-2018 - November 2019

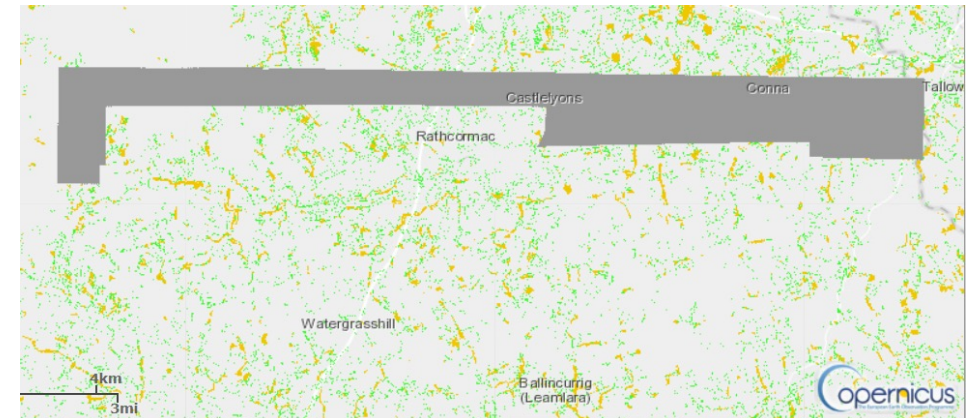
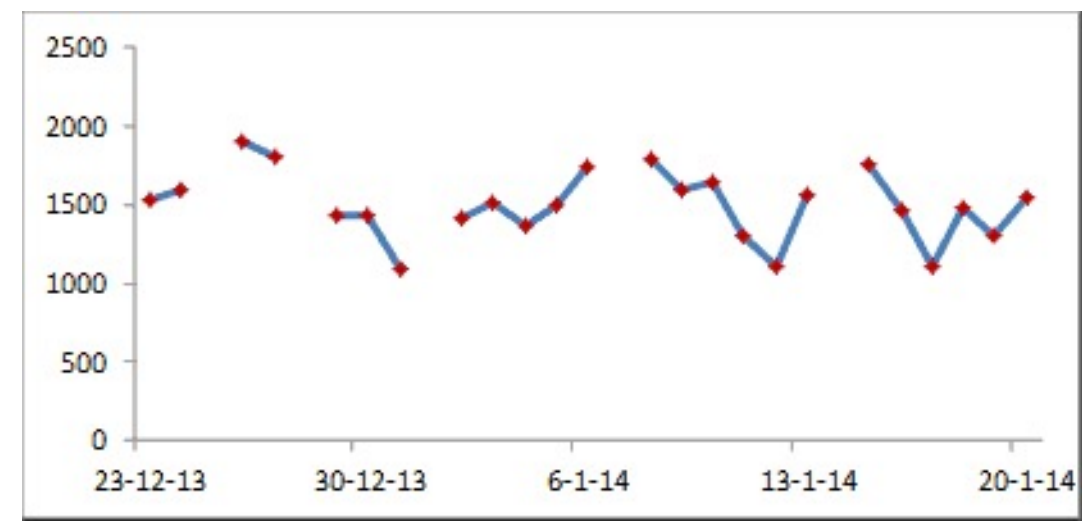
Article 17 GIS and Metadata Downloads

The spatial data for the second and third 6-yearly Article 17 reports, in 2012 and 2019 are available here.

- [Spatial data for 2019](#)
- [Spatial data for 2012](#)

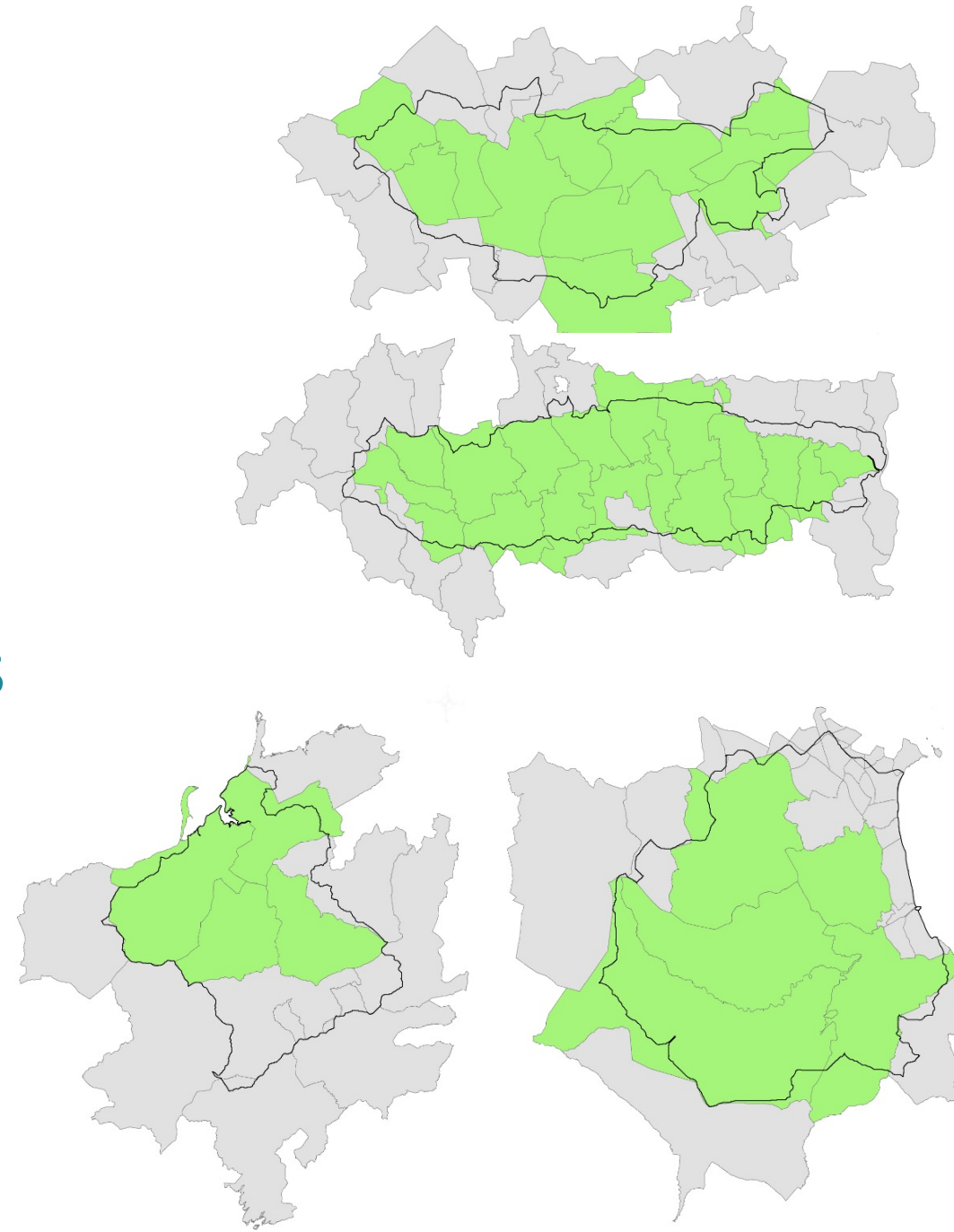
Challenges

1. Finding the Data
2. Coverage
3. Resolution and Coordinates
4. Time Series
5. Data Gaps

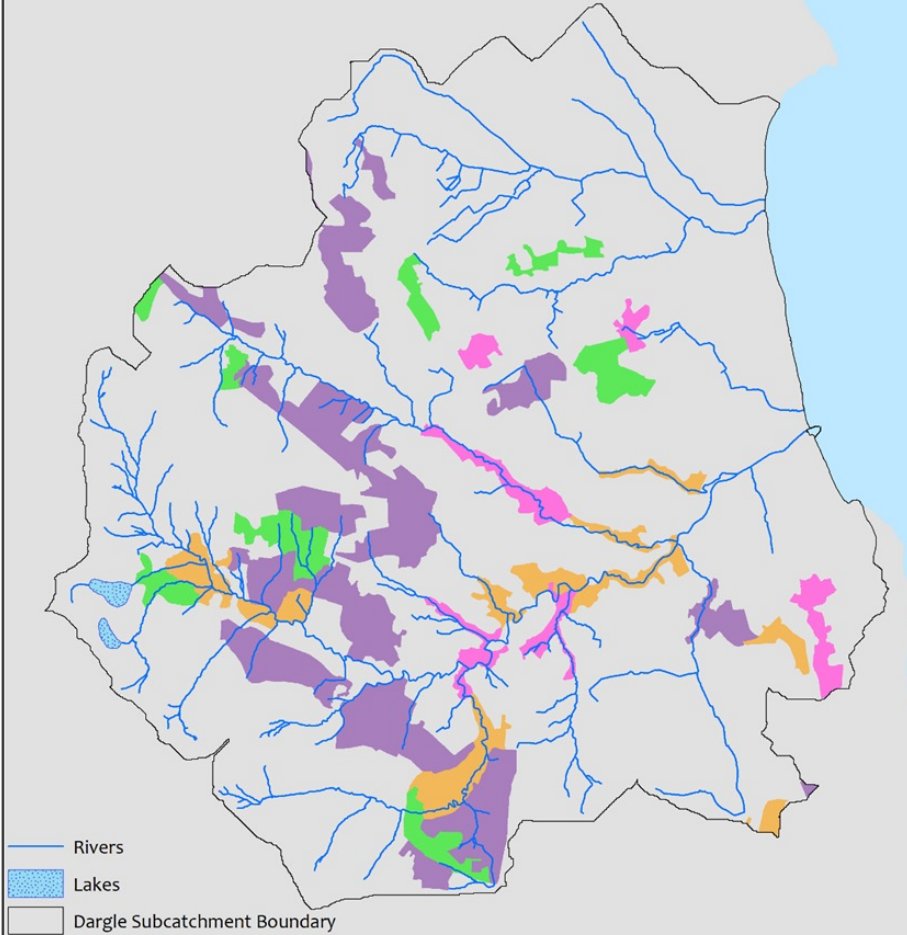


Challenges

1. Finding the Data
2. Coverage
3. Resolution and Coordinates
4. Time Series
5. Data Gaps
6. Catchments

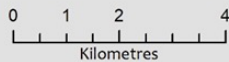


CORINE 2018 Forestry and Woodland Classifications in the Dargle Subcatchment



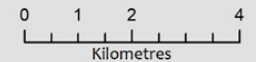
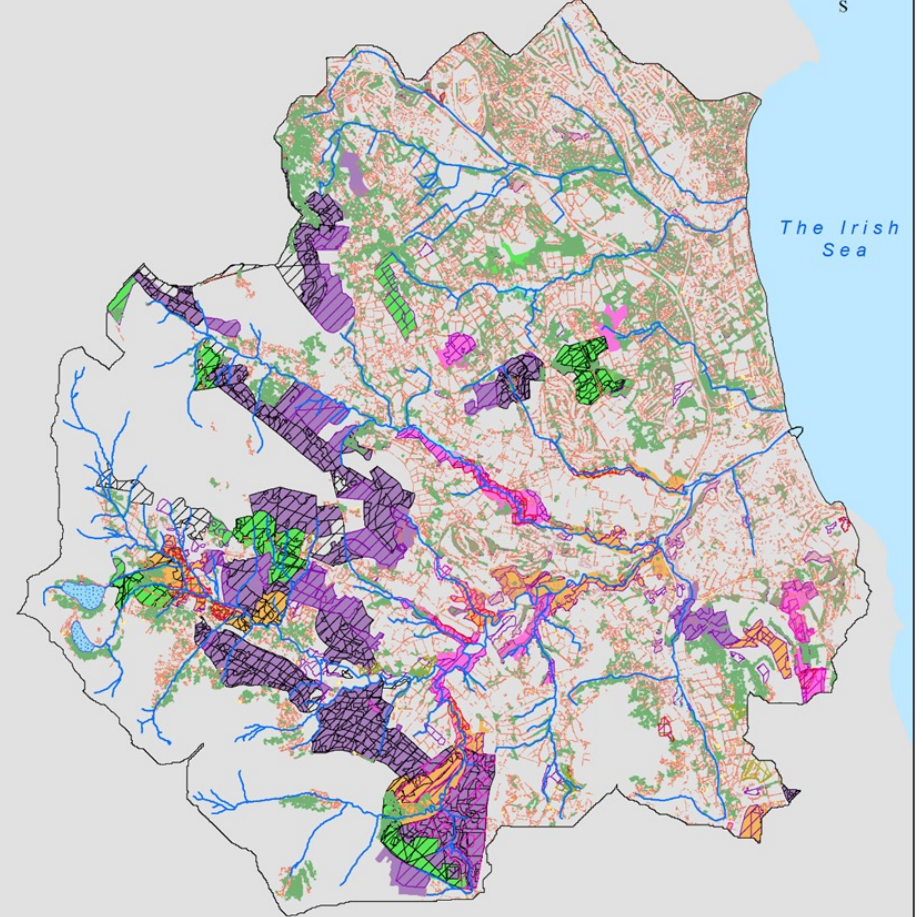
CORINE 2018 Forestry and Woodland Classifications

- Broad-leaved forest
- Coniferous forest
- Mixed forest
- Transitional woodland-shrub



Lisa Coleman 22nd September 2020
 Source: EPA,
 EEA Copernicus Land Monitoring Service

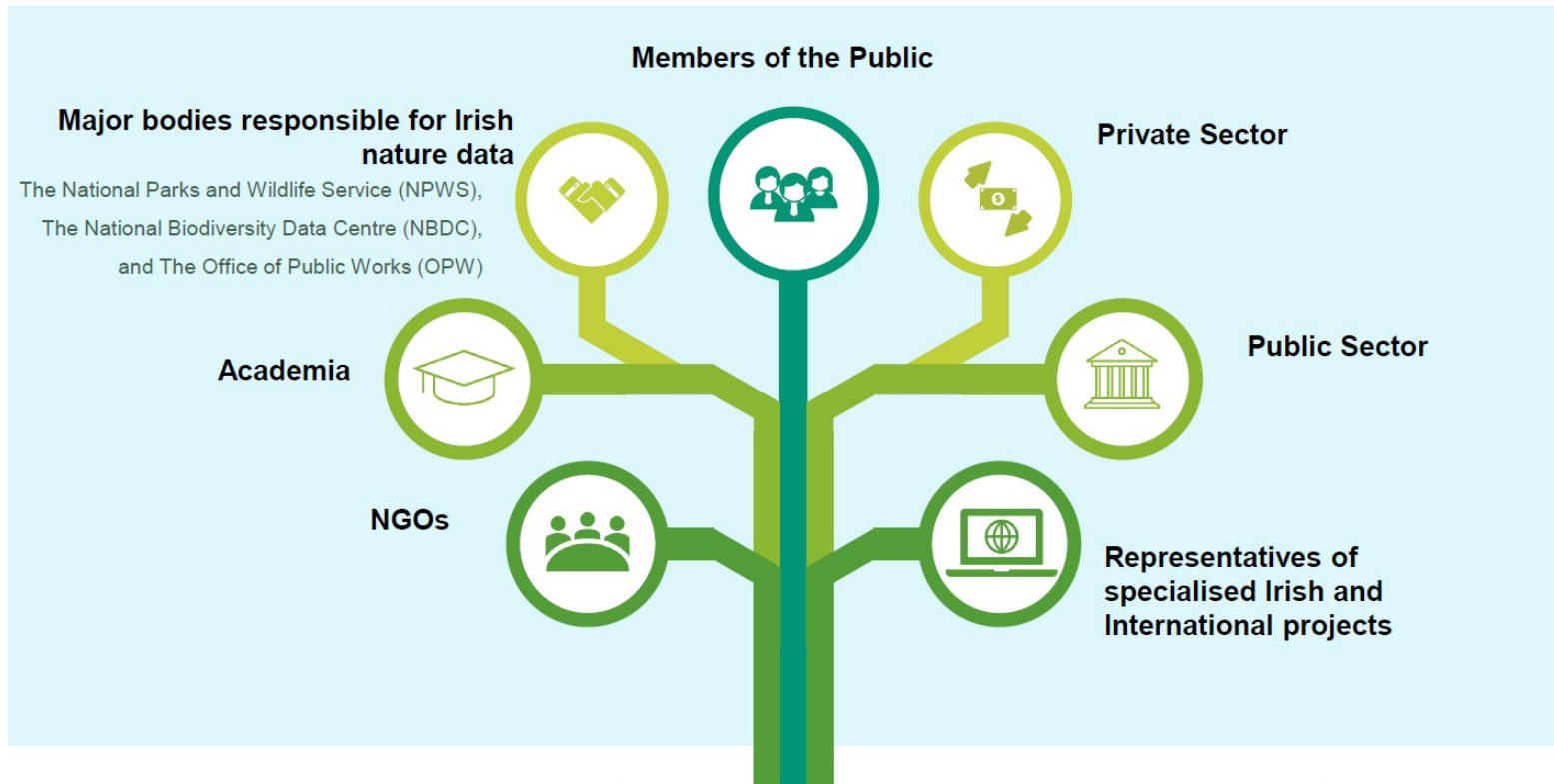
Forestry and Woodland in the Dargle Subcatchment



Lisa Coleman 7th October 2020
 Source: EPA, NPWS, Coillte, Forest Service
 Department of Agriculture, Food and the Marine,
 EEA Copernicus Land Monitoring Service,

Data4Nature Workshop and Report

- Held 11th May 2021, with over 100 attendees and 13 expert presentations
- This event was funded under the Open Data Engagement Fund of the Department of Public Expenditure and Reform with additional funding from the Office of Public Works.



NATURAL
CAPITAL
IRELAND



Data4Nature Workshop and Report

Main Aims

1. To establish the state-of-play for nature-related data in Ireland
2. To facilitate a conversation between data collectors, publishers and users
3. To record the key themes and concerns of those working with nature data
4. To present recommendations to Minister of State with special responsibility for Public Procurement & e-Government Ossian Smyth based on workshop outcomes



Data4Nature Workshop and Report

Main Aims

1. To establish the state-of-play for nature-related data in Ireland
2. To facilitate a conversation between data collectors, publishers and users
3. To record the key themes and concerns of those working with nature data
4. To present recommendations to Minister of State with special responsibility for Public Procurement & e-Government Ossian Smyth based on workshop outcomes



Themes

Availability

Accessibility

Usability

Accuracy

Reproducibility

Discoverability



5 Key Recommendations

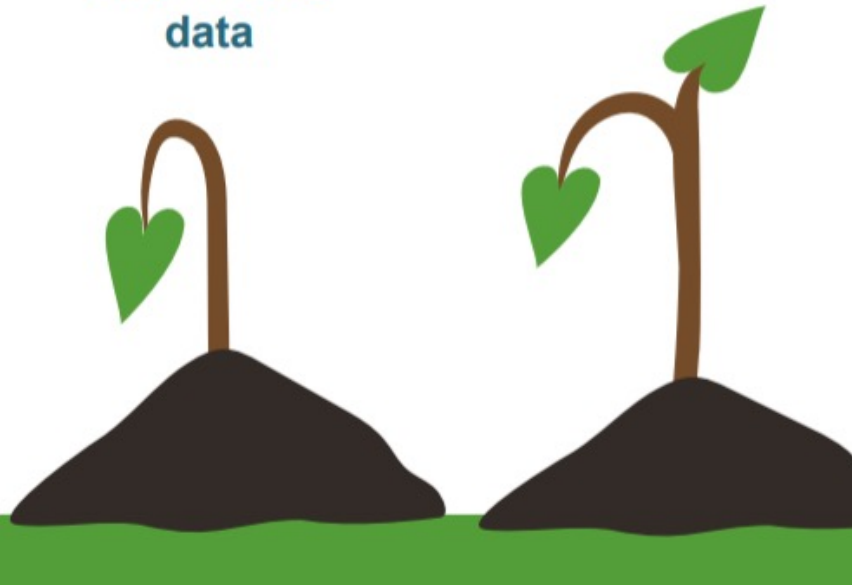
1. Develop a
central
dashboard for
Irish nature
data



5 Key Recommendations

1. Develop a central dashboard for Irish nature data

2. Establish robust data gathering protocols



5 Key Recommendations

1. Develop a central dashboard for Irish nature data

2. Establish robust data gathering protocols

3. Harmonise formats



5 Key Recommendations

1. Develop a central dashboard for Irish nature data

2. Establish robust data gathering protocols

3. Harmonise formats

4. Publicise and promote



5 Key Recommendations

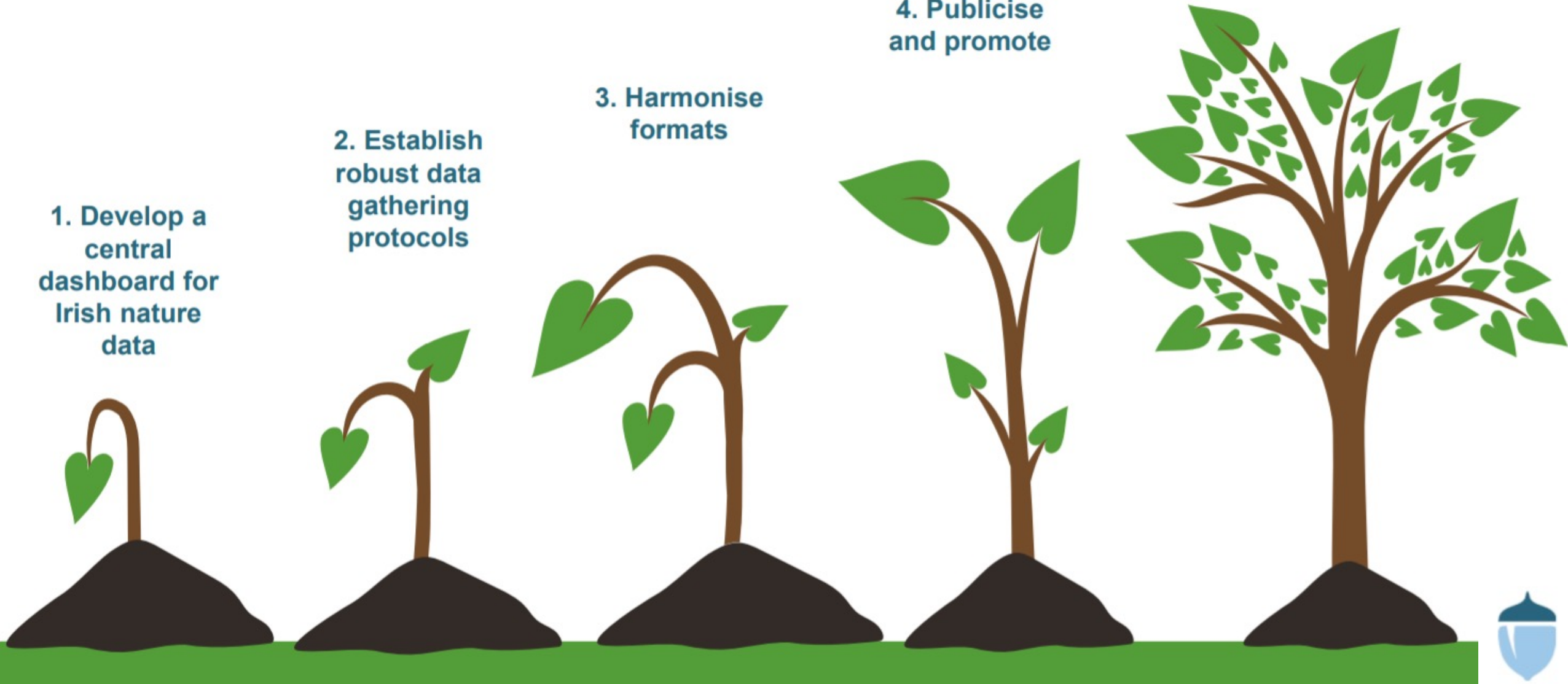
1. Develop a central dashboard for Irish nature data

2. Establish robust data gathering protocols

3. Harmonise formats

4. Publicise and promote

5. Ensure open & equal access





Irish Natural Capital Accounting for Sustainable Environments



NATURAL
CAPITAL
IRELAND

Thanks for listening!

INCASE Website: <https://www.incaseproject.com/>

INCASE Twitter: @IncaseProject

Natural Capital Ireland Website: <https://www.naturalcapitalireland.com/>

Natural Capital Ireland Twitter: @NatCap_Irl

Data4Nature Report and Workshop Recordings: <https://www.naturalcapitalireland.com/data4nature>

Read more about our work on INCASE in our paper: <https://oneecosystem.pensoft.net/article/65582/>