

# Outcomes4Children.tusla.ie

Outcomes for Children Data & Information Hub

Healthy

Achieving

Safe

Security

Connected

Demographics



An Gníomhaireacht um  
Leanaí agus an Teaghlach  
Child and Family Agency



An Roinn Leanaí  
agus Gnóthaí Oige  
Department of Children  
and Youth Affairs



2020 Open Data Conference, 2<sup>nd</sup> December 2020  
Open Data for a Data Driven Public Service Delivery  
Peggy Ryan, Sheila Moore, Information Management, TUSLA WEST

# Introduction & Background

In 2016 TUSLA and the DCEDIY agreed to the establishment of a new project  
**Outcomes for Children National Data & Information Hub**

- This initiative arose out of Children & Families Services (*in the HSE*) involvement in the border areas of the NW and NE, in partnership with colleagues in NI on a cross-border Project – CAWT (2009-2011).
- This project is one of the initiatives of TUSLA's National Prevention, Partnership and Family Support (PPFS) Programme, building on the legacy experience and knowledge from Children & Families Services being involved in the CAWT project in border Areas during the years 2009 to 2011.
- Funding for this project was agreed and ring fenced through the AP PPFS grant and DCEDIY/What Works for product prototype development and a pilot to include (initially) 11 CYPSCs in Phase 1.
- Ongoing independent evaluation was conducted throughout Phase I via NUIG, Child & Family Research Centre.
- The Outcomes for Children Data & Information Hub is now live at [outcomes4children.tusla.ie](https://outcomes4children.tusla.ie) and continues to be supported by TUSLA and DCEDIY for sustainability.

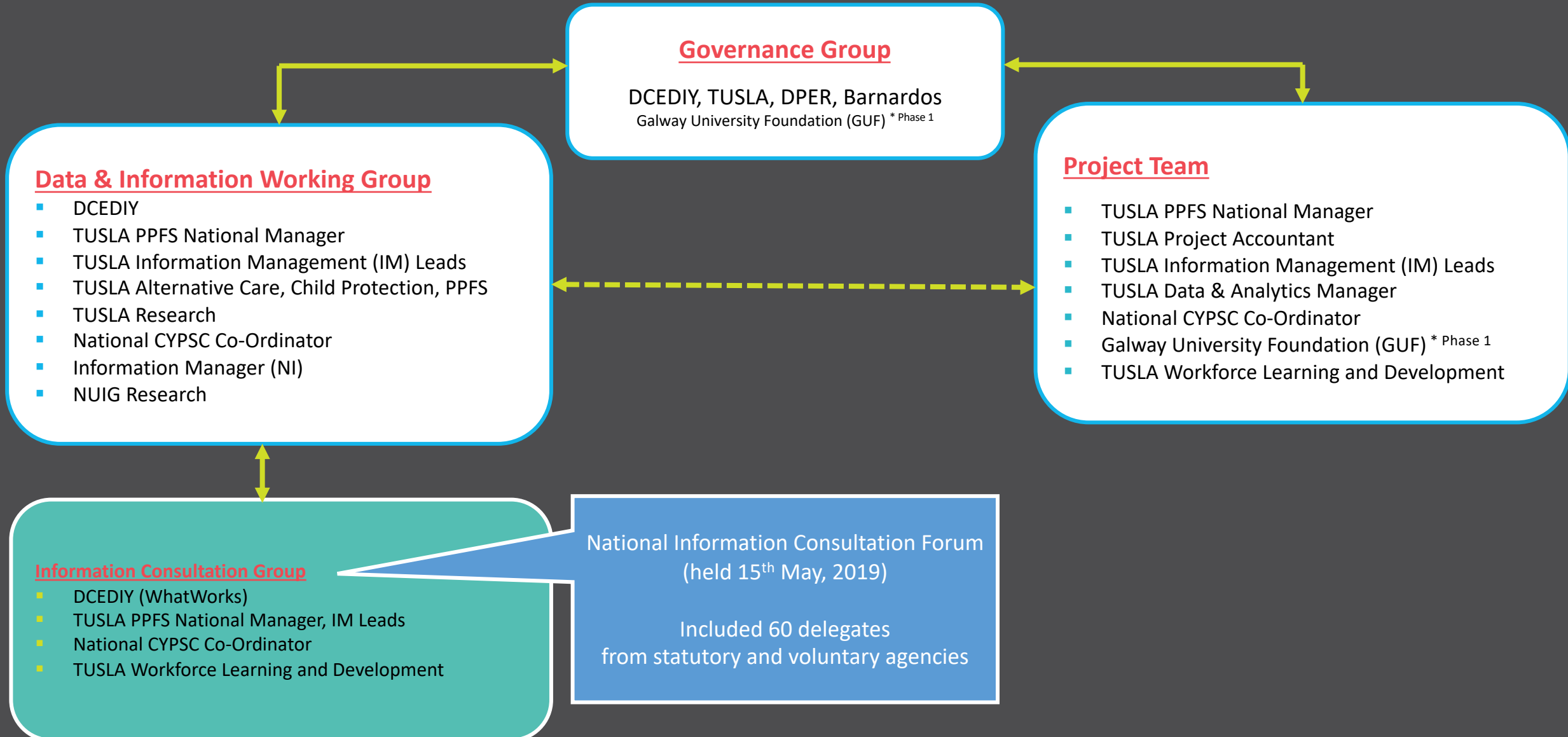
# Aims & Objectives

## Outcomes for Children National Data & Information Hub

- Incrementally build one centralised national Data Hub that will host a wide range of published data from various agencies involved in the provision of services to Children, Young People and Families.
- Agree a set of indicators referencing the published national set of indicators (DCYA), framed against the five national outcomes **Better Outcomes, Brighter Futures (BOBF)**.
- Use validated and quality assured datasets from the agencies to populate the agreed indicator set.
- Train and support both TUSLA personnel and relevant **CYPSC** partners at national and local level in the use and application of the system to underpin and optimise children's services planning.
- Inform the enhancement of both quantitative and qualitative data collection to support TUSLA and the DCEDIY research agendas and meet corporate objectives regarding capacity as a learning organisation.
- Utilise relevant published datasets from the Open Data platform.
- Underpinning the development of the Hub, the principles of **Outcomes Based Accountability (OBA/RBA)** methodology (training delivered to CYPSC 2018)

# Project Structure

## Outcomes for Children National Data & Information Hub





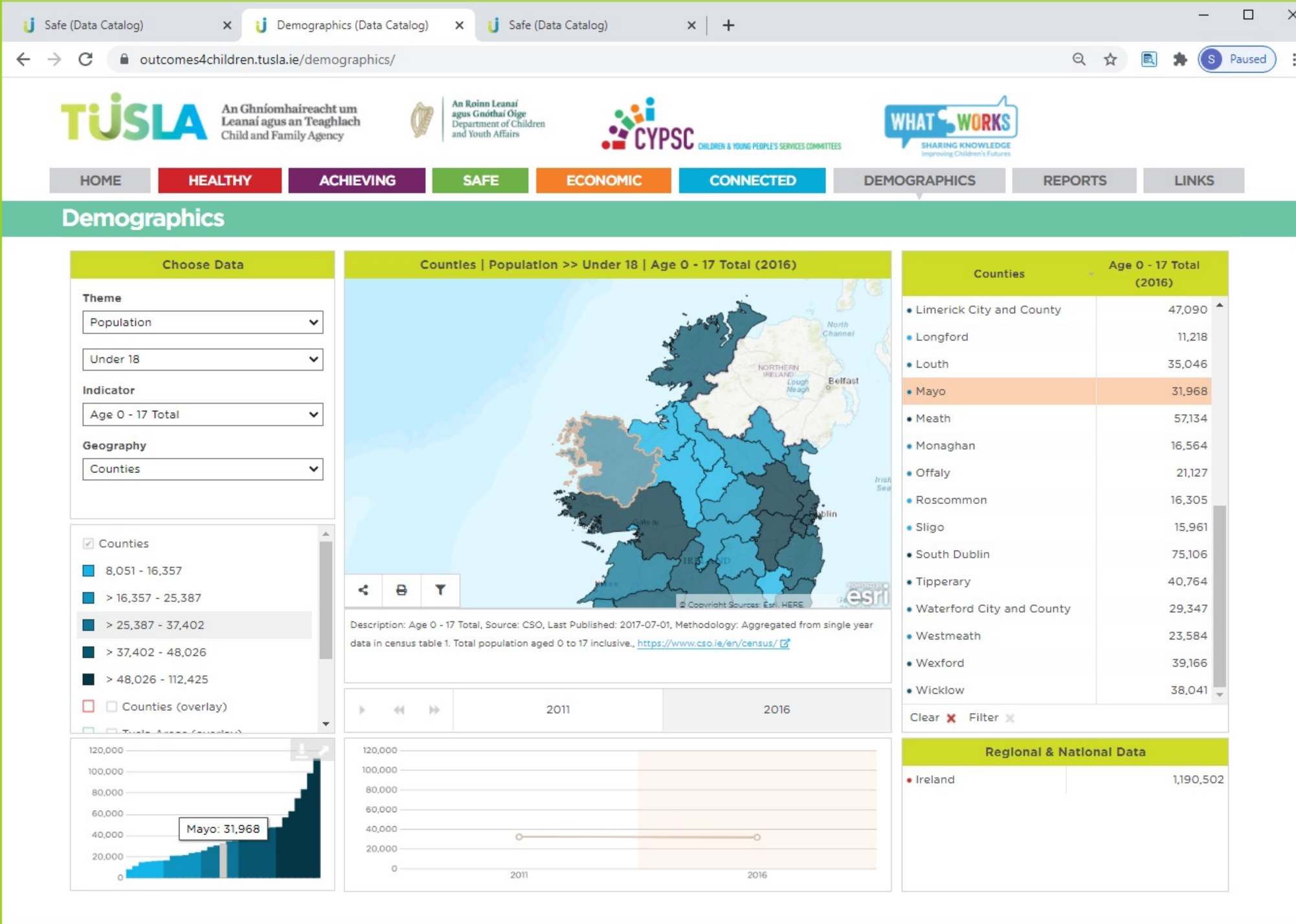
# Outcomes4Children Data & Information Hub

## Building CYPSC Profiles Using O4C Hub

here. The hub will be continually updated as and when the relevant published reports become available.'"/&gt;

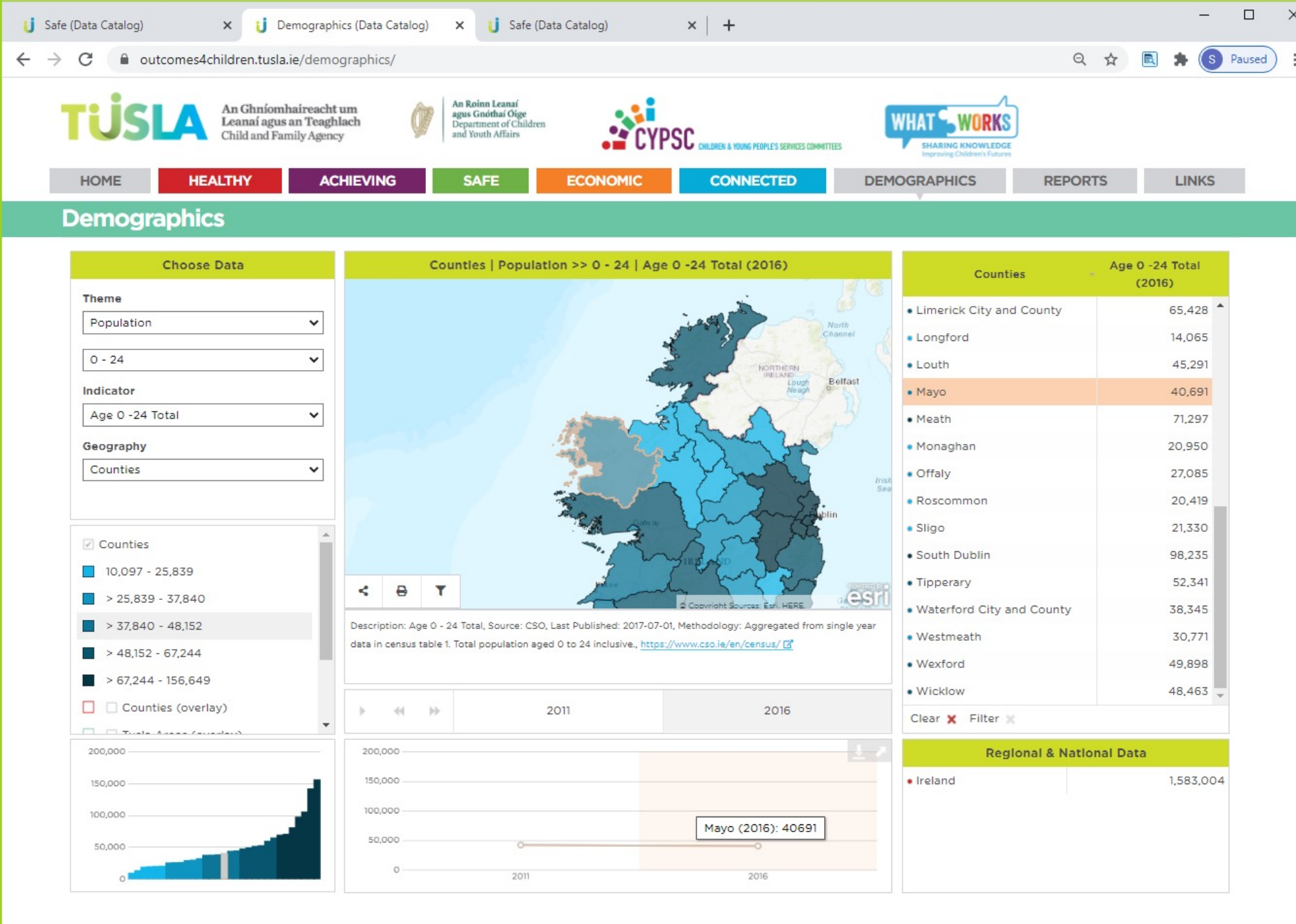
**Mayo** Children and Young People's Services Committee was established in 2015 and draws its membership from the main statutory, community and voluntary providers of services to children and young people in County Mayo. While the Department of Children and Youth Affairs (DCYA) provides the policy lead for CYPSC nationally, strategic leadership here in Mayo is provided by the Tusla Area Manager and Chairperson of Mayo Children and Young People's Services Committee .....

# Demographics | Population, Under 18 Years

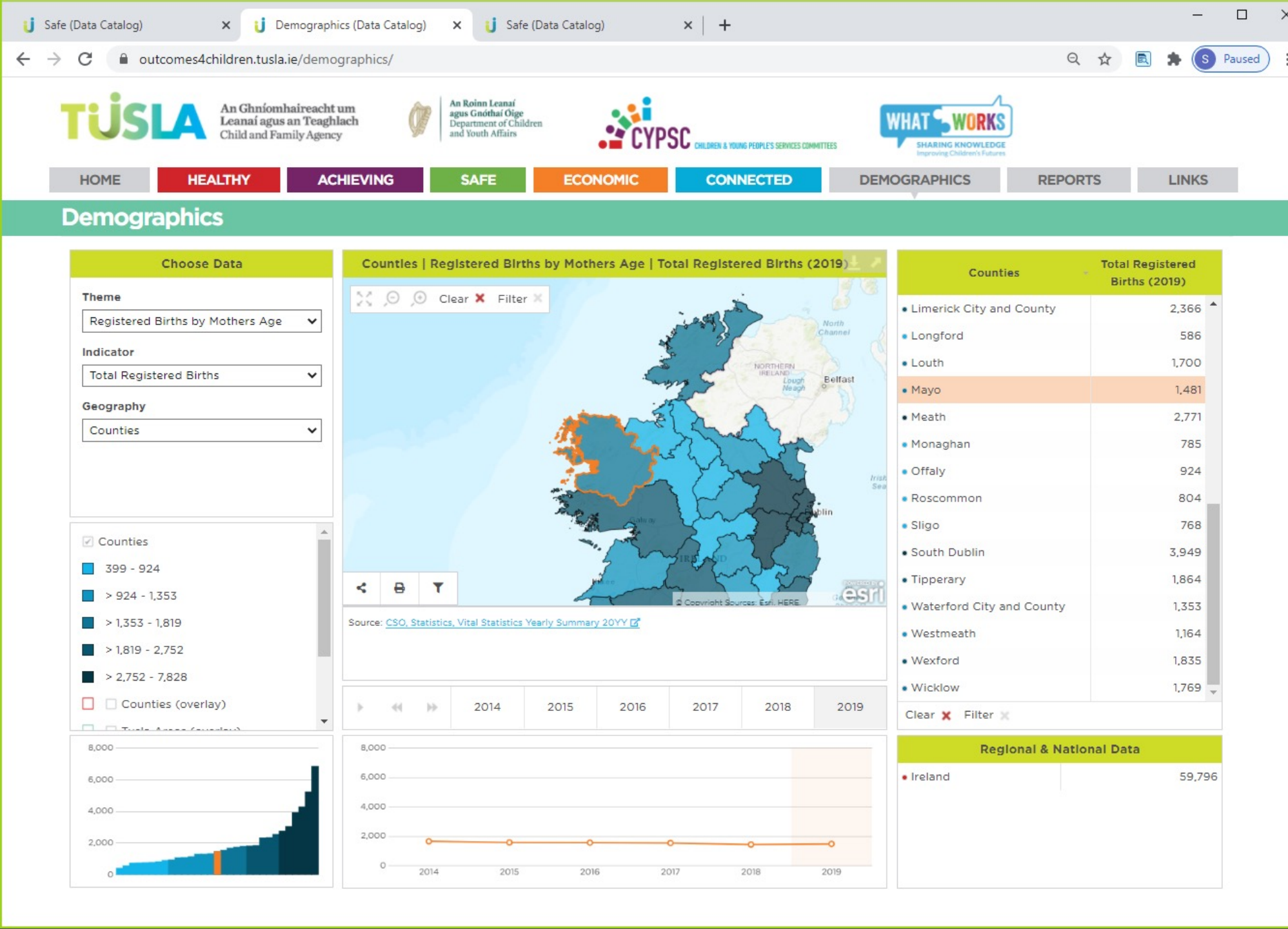




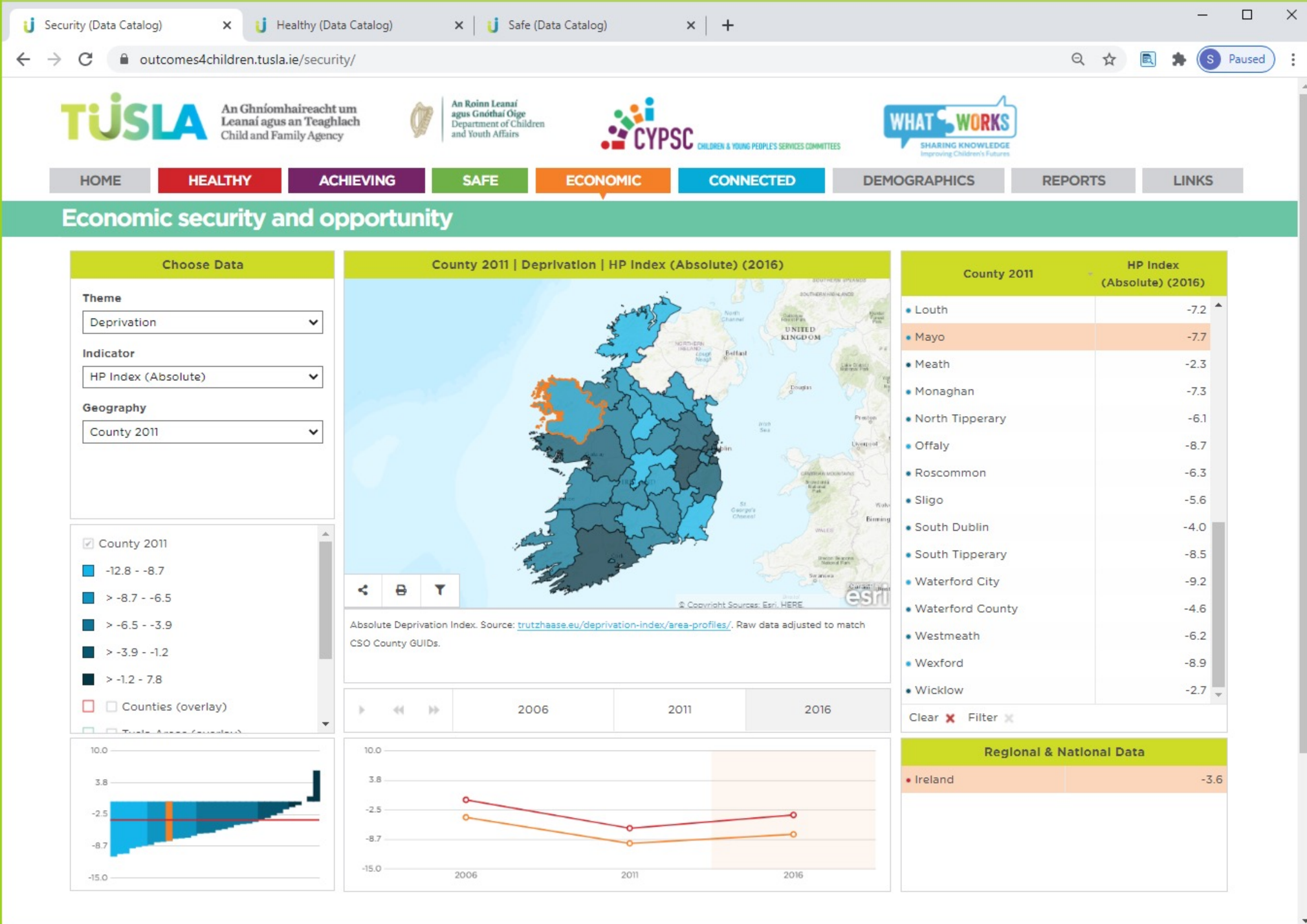
# Demographics | Population, 0-24 Years



# Demographics | Registered Births

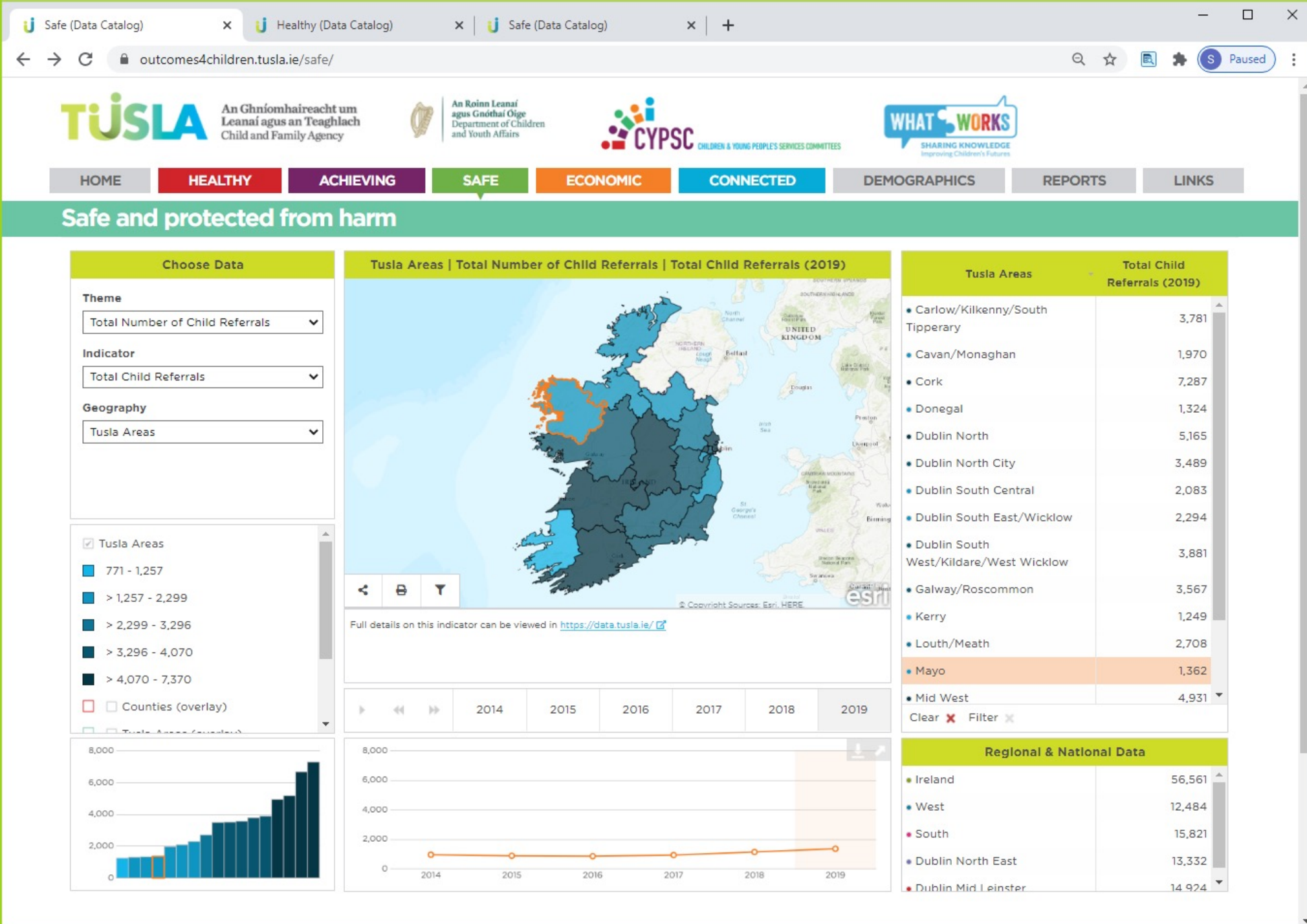


# Economic Security and Opportunity | Deprivation

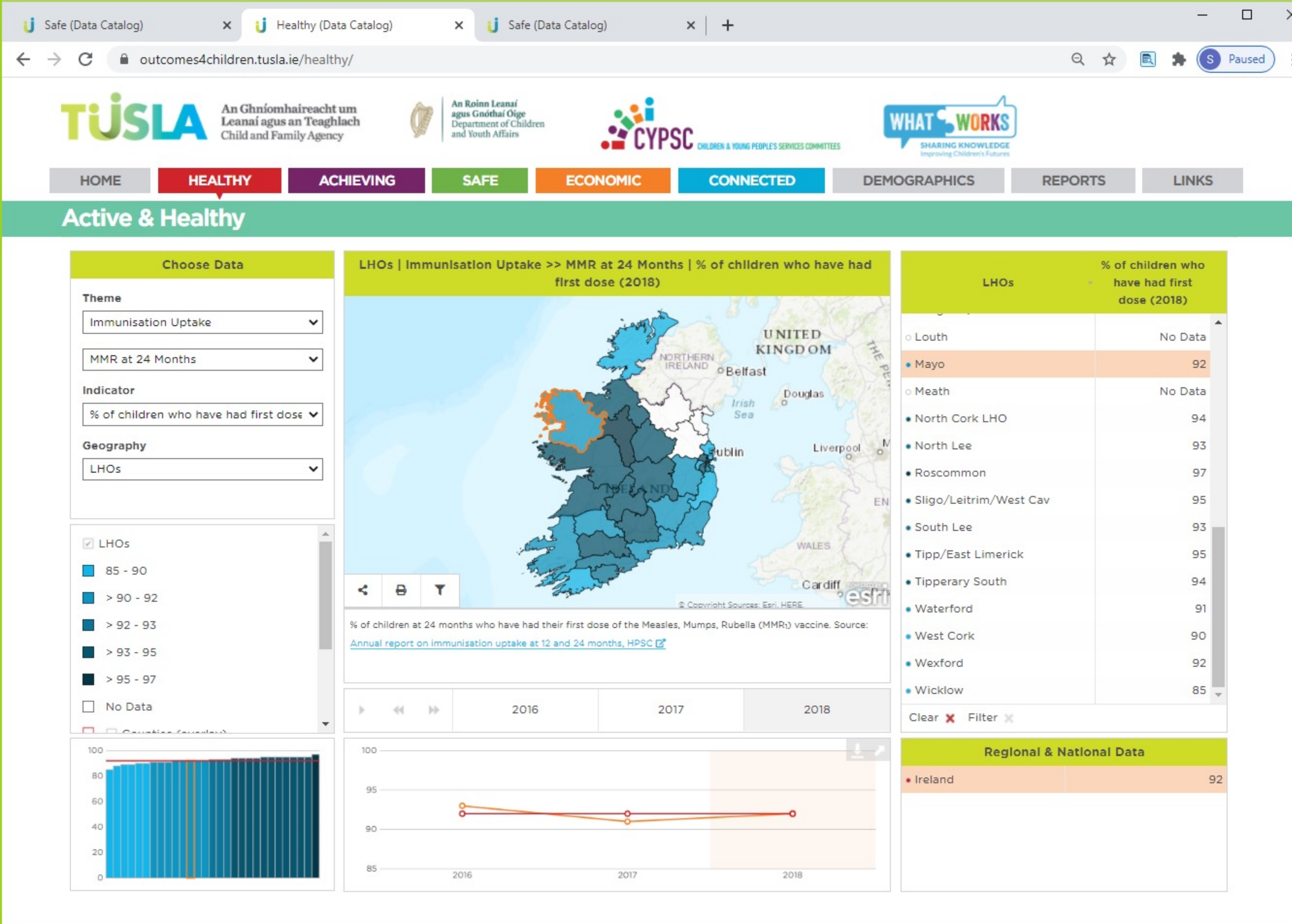




# Safe and Protected from Harm | Total Number of Child Referrals



# Active & Healthy | Immunisation Uptake

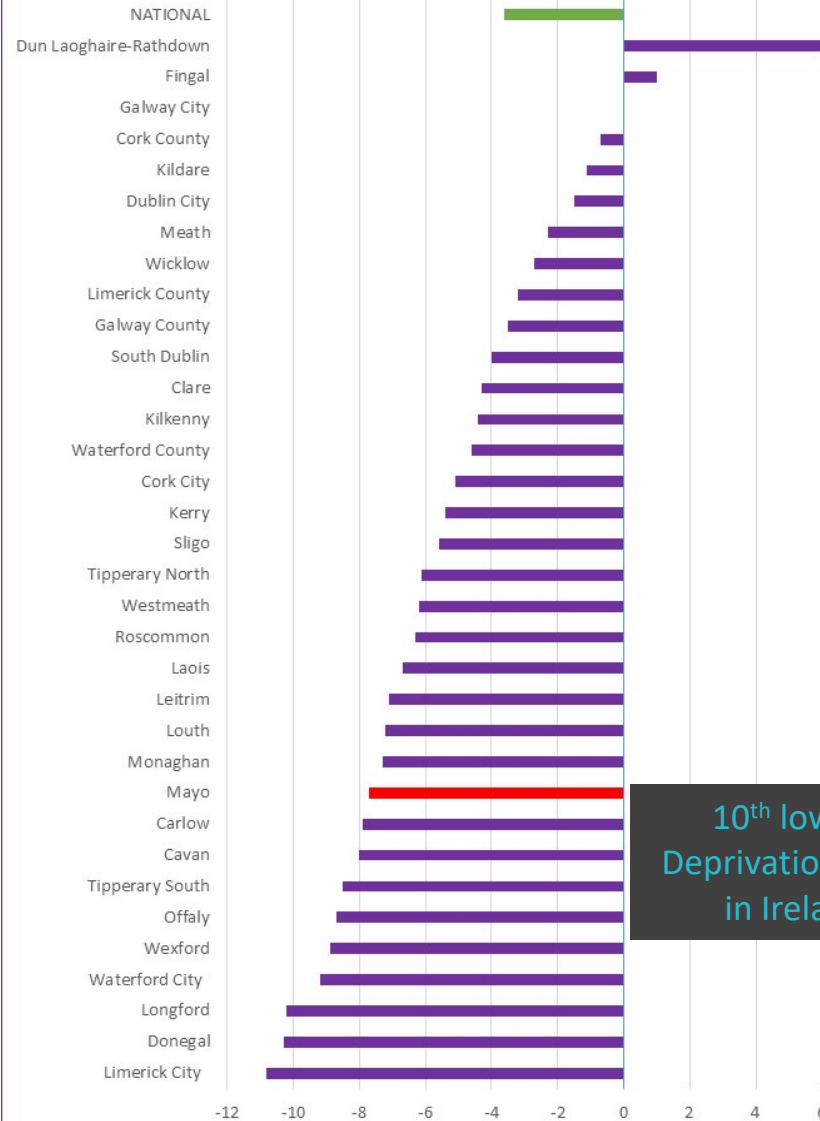


# Building a Standard Profile Report for all CYPSCs | Mayo Sample Profile

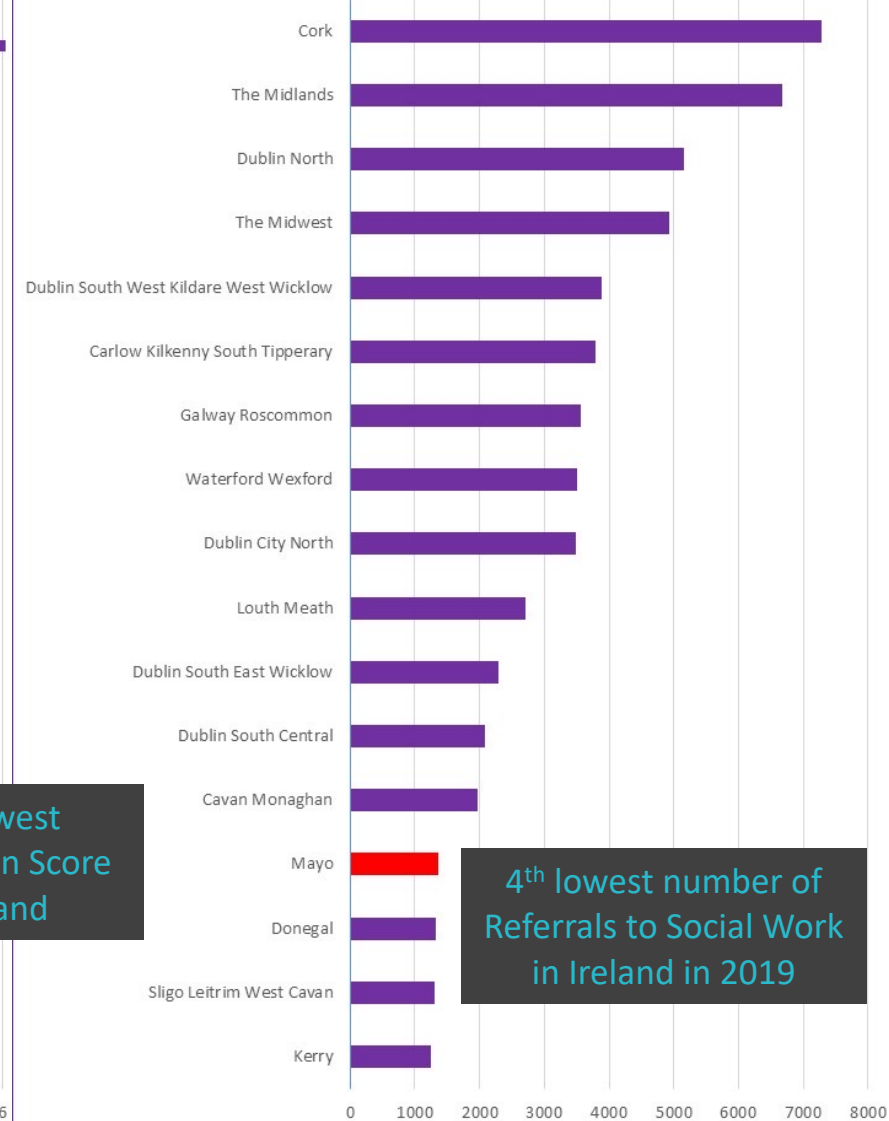
Total Under 18Yrs Population, Year 2016



Deprivation | HP Index (Absolute), Year 2016



Referrals to Tusla Social Work, 2019



## Demographics

### Choose Data

#### Theme

Population

Under 18

#### Indicator

Age 0 - 17 Total

#### Geography

Counties

☒ Counties

☒ 8,051 - 16,357

☒ > 16,357 - 25,387

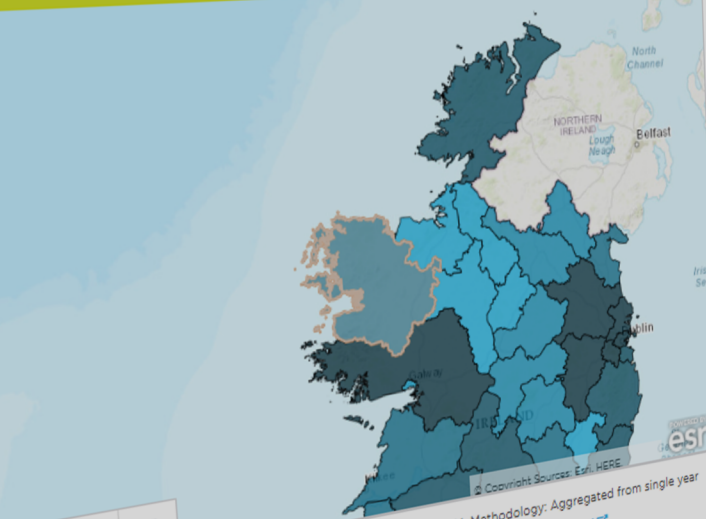
☒ > 25,387 - 37,402

☒ > 37,402 - 48,026

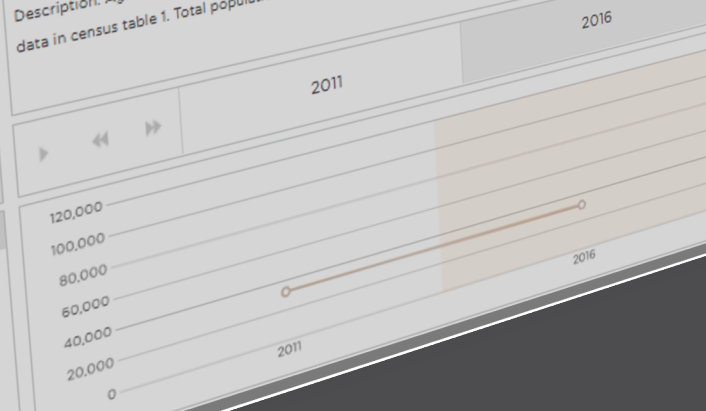
☒ > 48,026 - 112,425

☐ Counties (overlay)

### Counties | Population >> Under 18 | Age 0 - 17 Total (2016)



Description: Age 0 - 17 Total, Source: CSO, Last Published: 2017-07-01, Methodology: Aggregated from single year data in census table 1. Total population aged 0 to 17 inclusive. <https://www.cso.ie/en/census/>



#### Counties

Age 0 - 17 Total  
(2016)

• Limerick City and County	47,090
• Longford	11,218
• Louth	35,046
• Mayo	31,968
• Meath	57,134
• Monaghan	16,564
• Offaly	21,127
• Roscommon	16,305
• Sligo	15,961
• South Dublin	75,106
• Tipperary	40,764
• Waterford City and County	29,347
• Westmeath	23,584
• Wexford	39,166
• Wicklow	38,041

Clear ☒ Filter ☒

#### Regional & National Data

• Ireland 1,190,502

## Backend Data Load

- (i) Manual Load from published documentation via .csv files
- (ii) Automated Load via Open Data Platform (available datasets)





# Outcomes4Children.tusla.ie

Outcomes4Children Data & Information Hub

Healthy

Achieving

Safe

Security

Connected

Demographics

**TUSLA**

An Ghníomhaireacht um  
Leanaí agus an Teaghlach  
Child and Family Agency



An Roinn Leanaí  
agus Gnóthaí Óige  
Department of Children  
and Youth Affairs



CHILDREN & YOUNG PEOPLE'S SERVICES COMMITTEES



SHARING KNOWLEDGE  
Inspiring Children's Futures

# Thank You